

Dispenser: 478
Container: 478
 Upper diameter mm.

Dispenser: 478
Container: 280
 Lower diameter mm.

Dispenser: 330
Container: 660
 Height mm.

Support: 1.120
 Height mm.

Opening: 240 x 130
 Dimensions mm.



FEATURES

Body and lid manufactured from high-density polyethylene.

The container comprises of a cone-shaped basket made from 6 mm thick polyethylene, and a smaller basket inside, where the dog waste is deposited.

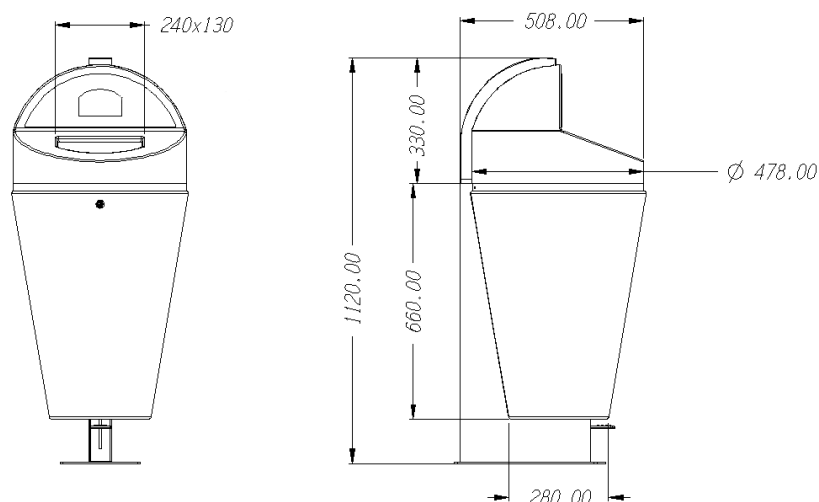
The semi-circular shaped lid has a bag feeder mechanism with a single dispenser that can contain up to 600 bags. This heavy-duty curved unit is designed to enable the lid to swivel open on a hinge, and locked using a standard key.

The gloves/bags are black to disguise the contents. They are recyclable, opaque and waterproof and their ergonomic design and size makes them easy to use.

The mounting system comprises of the support structure holding the unit, and the base plate which anchors it to the ground. The 420 x 120 x 4 mm flat base plate has four drill holes to take the adjustable threaded anchor bolts.

Designed with vertical grooves and a grained finish to prevent fly-posting.

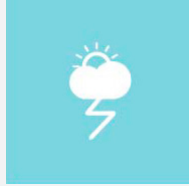
STANDARDS



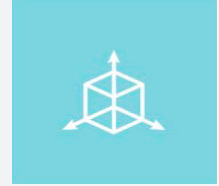
ATTRIBUTES



RESISTANT



DURABILITY



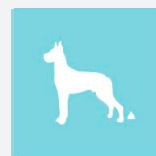
DESIGN



EQUIPMENT

It has a pedal-operated lid for easy disposal of the gloves/ bags after use.

The latest advances in vandal-resistant technology make the entire structure really robust.



Canine waste



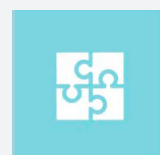
Personalised



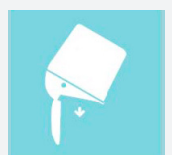
Easy to clean



Easier maintenance



Easier assemble



Easier emptying