

**770<sub>L</sub>**  
Capacity

**308<sub>Kg</sub>**  
Nominal load

**160 / 200 mm**  
Wheels diameter



## FEATURES

The body and lid are injection moulded in solid coloured high-density polyethylene.

Manufactured using environmentally-friendly recyclable materials.

No heavy metals in the pigments.

Ideal for different types of waste collection: paper and cardboard, glass, packaging, organic matter, etc. ...

Available in a wide range of colours..

DIN, AFNOR, OSCHNER or VENTRAL lifting systems.

Customisation of lid with thermal transfer graphic, area: 230 x 45 mm.

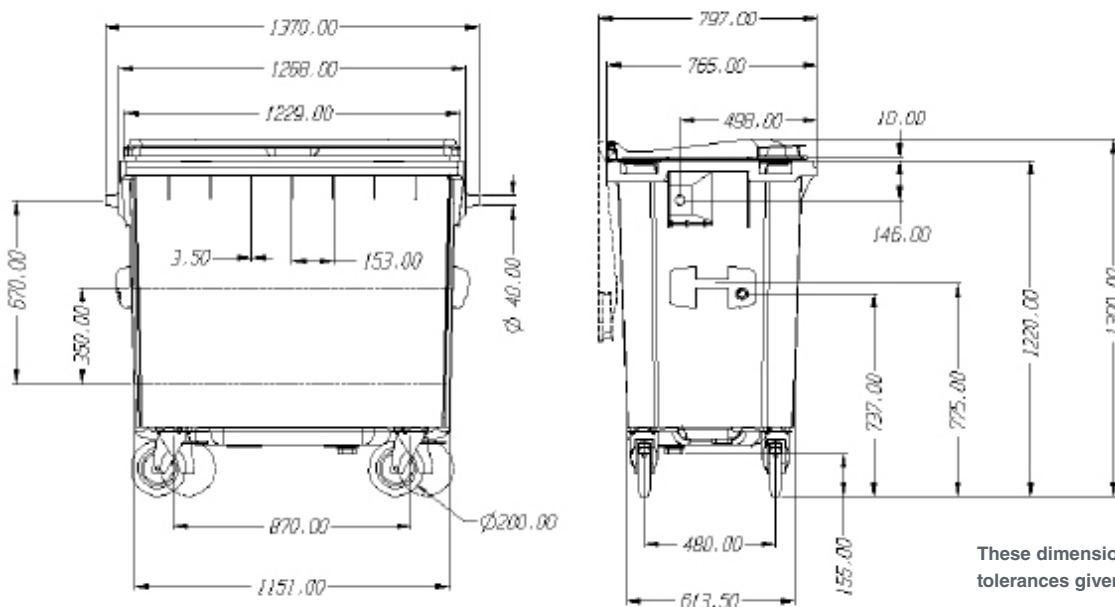
Customisation of body with silk screen or thermal transfer graphic, area: 300 x 400 mm.

CE Marking with sound power level indicated in accordance with European Directive 2000/14/EC. 92,0 db.

Product Approval Certificate awarded by TÜV Product Service GmbH in accordance with European Standard EN 840:2012

UN certificate for the transportation of hazardous goods.

## STANDARDS



These dimensions are subject to the tolerances given in EN 840-1:2012.

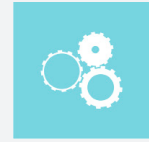
### ATTRIBUTES



QUALITY

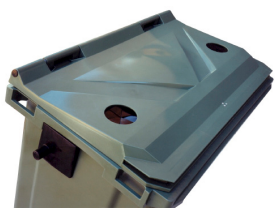


ACCESSIBILITY



FUNCTIONALITY

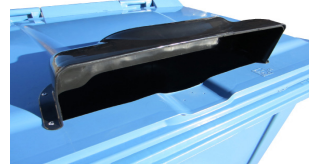
### ACCESSORIES



GLASS APERTURE



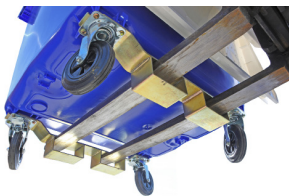
PLASTIC APERTURE



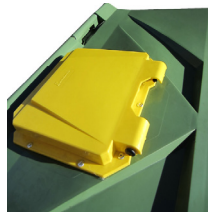
PAPER APERTURE



CENTRAL BRAKE SYSTEM



LIFTING SYSTEM



RAIN COVER



PEDAL



AVAILABLE IN A WIDE RANGE OF COLOURS

### EQUIPMENT

160 or 200 mm diameter wheels.

Openings with sizes and features specially designed to accommodate each type of waste, making them easy to use.

Integrated sound-proofing system in the lid.

Integrated handles in the body and lid for easy handling.

Recess for electronic chips.

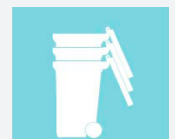
Can be equipped with a range of accessories providing real solutions to every requirement: pedal-operated lid opening, reflective strips, lock, side handle.



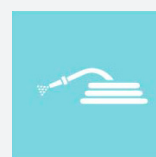
Sound-proofing



Lock



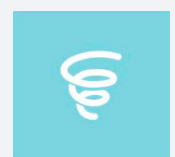
Easy to stack



Easy to clean



Brake



Shock absorber